

# FB series



Makeup Tools



Bags



Leather Accessory  
& Small Goods



Camera Bags  
& Accessory



Other Lines

## FB-03



This brush case made of the same fiber material of the make-up boxes is the ideal for brushes, pencils, mascara, lip-gloss and other similar items. It can also be enclosed in the make-up boxes of the same series to make the perfect coordination set of make-up, tools and accessories.

Material Fiber - Synthetic Leather  
 External Size W75xH95xD75mm  
 Internal Size W82xH107xD82mm  
 Tray (folded) Size W70mm  
 Color Black ■

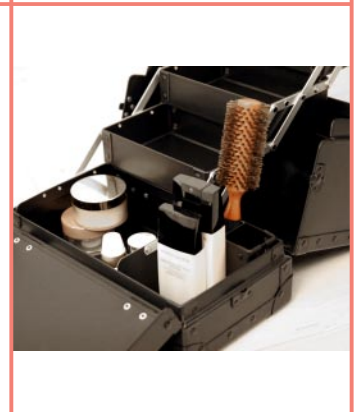


## FB-011



Keeping in mind the unquestionable skills and distinguished taste for excellence of the most demanding make-up artists this professional fiber make-up box makes its appearance on the scene. Thanks to its light and strong fiber material, it is possible to use this make-up box either as a professional workstation or simply for storing personal make-up products at home with style. Its height of 26cm consents to store and carry even the biggest cosmetic bottles and hair brushes, beside different tools of various shapes. The 19.5cm long moving trays give room to tubes, tools, etc..., leaving the free side of the box for products in bottles.

Material Fiber - Synthetic Leather  
 External Size W330xH270xD180mm  
 Internal Size W290xH260xD163mm  
 Tray (folded) Size W195xH125xD50mm  
 Color Black ■



## FB-021



A compact box especially designed for nail care but also very functional as traditional make-up box, for storing hair care products or carrying a minimum of very indispensable tools. The opposite side of the folded trays with a height of 20cm gives room to bottle shaped objects. The moving trays with a depth of 4cm can accommodate lipstick, make-up color kits and any other small tools and products.

Material Fiber - Synthetic Leather  
 External Size W240xH210xD155mm  
 Internal Size W235xH200xD150mm  
 Tray (folded) Size W105xH117xD40mm  
 Color Black ■



## FB-2005



This is another professional make-up box which has been designed for make-up artist's studios for maximum functionality with the moving trays' full opening span of 66.5cm and height of 16.5cm. Despite its good size, even if placed on a work table, it is not of any obstacle. When the two sets of trays are folded, in the center of the box is available a big area with a maximum height of 21cm where bottles can be easily carried. In the two sets of trays, one opening on the left and the other on the right, any kind of accessories and tools can be stored separately thanks to their depths of 4cm.

Material Fiber - Synthetic Leather  
 External Size W240xH210xD155mm  
 Internal Size W235xH200xD150mm  
 Tray (folded) Size W105xH117xD40mm  
 Color Black ■

